

sinaCAM

Accessories



The new
**Ultra Light
Lens Drive System**

Weight of pictured assembly:

0.49kg/17oz

HR-LM Lens Drive Cable

Lemo B1-7pin connector, compatible with
Aladin and similar lens drive controls

ULLD-100 Ultra Light Lens Drive

Compatible with all C-Mount lenses

12V, 0.5A max, 1Nm torque
(with CG33-201 and CG38-100)

Optimized for Aladin
lens drive controls

BPUL-100 Base Plate

Heightens the optical axis
to 48mm/1.889"

Compatible with
1/4" video mount

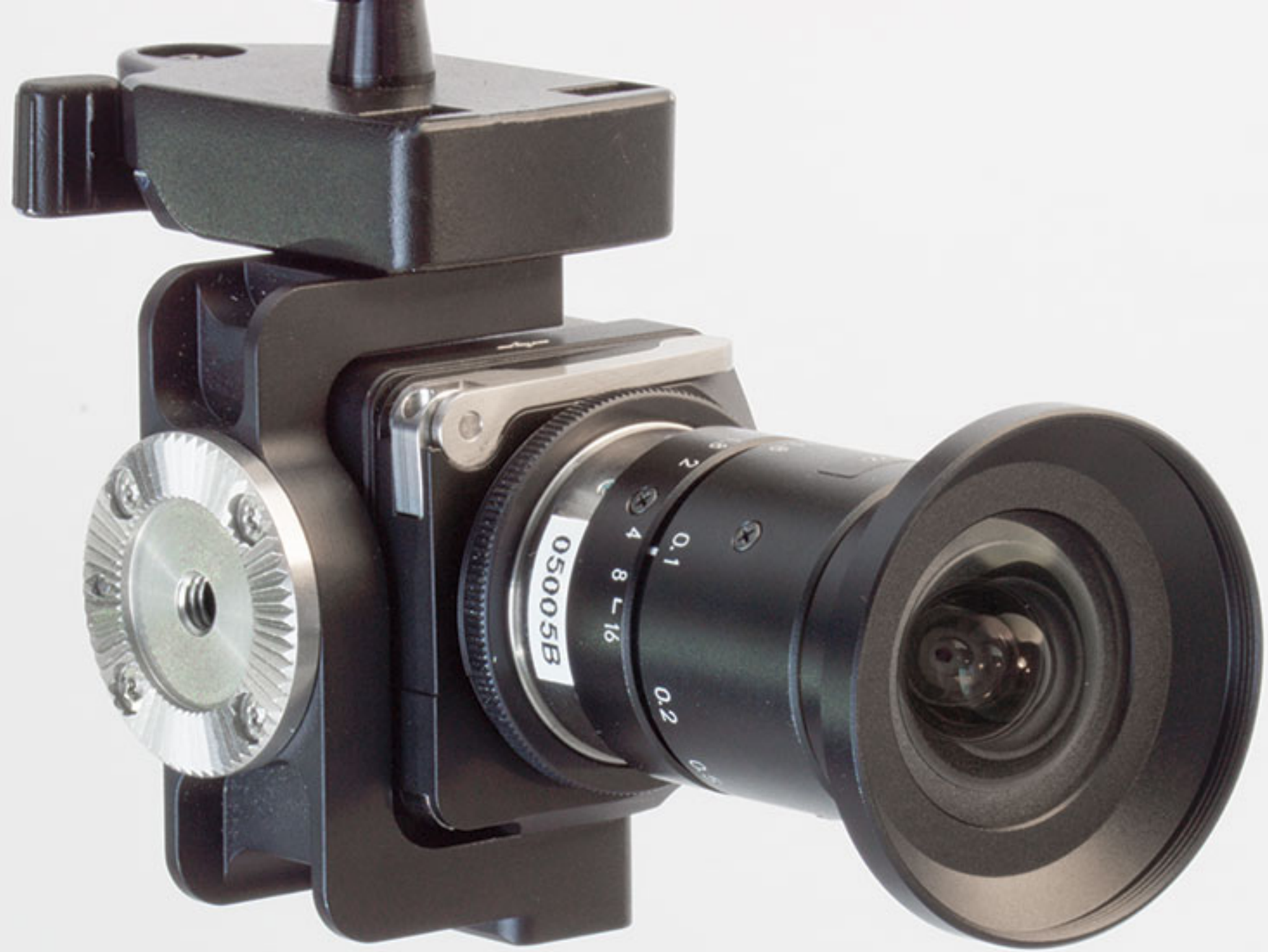
**ULG5/8-100
Drive Gear**

Modul 0.5/0.8

ULR2-100 Rod Support

ULCL-100 12mm Clamp





LMF1-100 Low Mode Frame

For top-down mounting



Transport Case

Custom made. Carries:
1 base unit, 1 power supply
2 camera heads inc. lens
2 accessory compartments
(lens adaptors, base plates...)
1 flip-down compartment



BPA1-100 Base Plate Adaptor

Heightens the optical axis to 40mm/1.575"

Compatible with 1/4" video mount



BP20-100 Base Plate

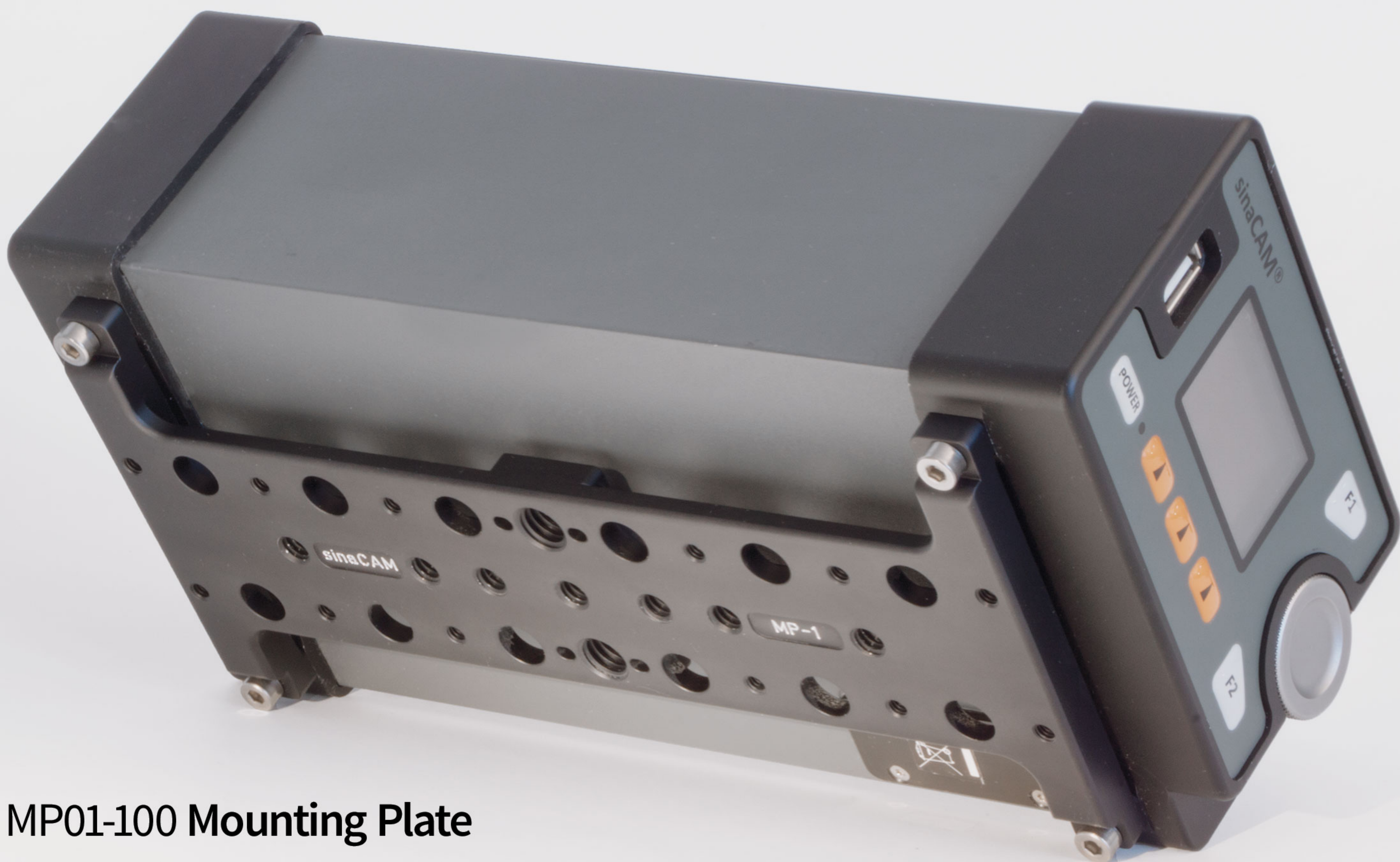
Heightens the optical axis to 60mm/2.362" (with BPA1-100)



SRS1-100 Single Rod System

Connects BP20-100 and LMF1-100 to 15mm rods





MP01-100 Mounting Plate

For mounting the base unit using various threads like 1/4", 3/8" and M4



AAVM-100 V-Mount Battery Adaptor

Mountable on top and bottom of base unit
Includes D-Tap connector

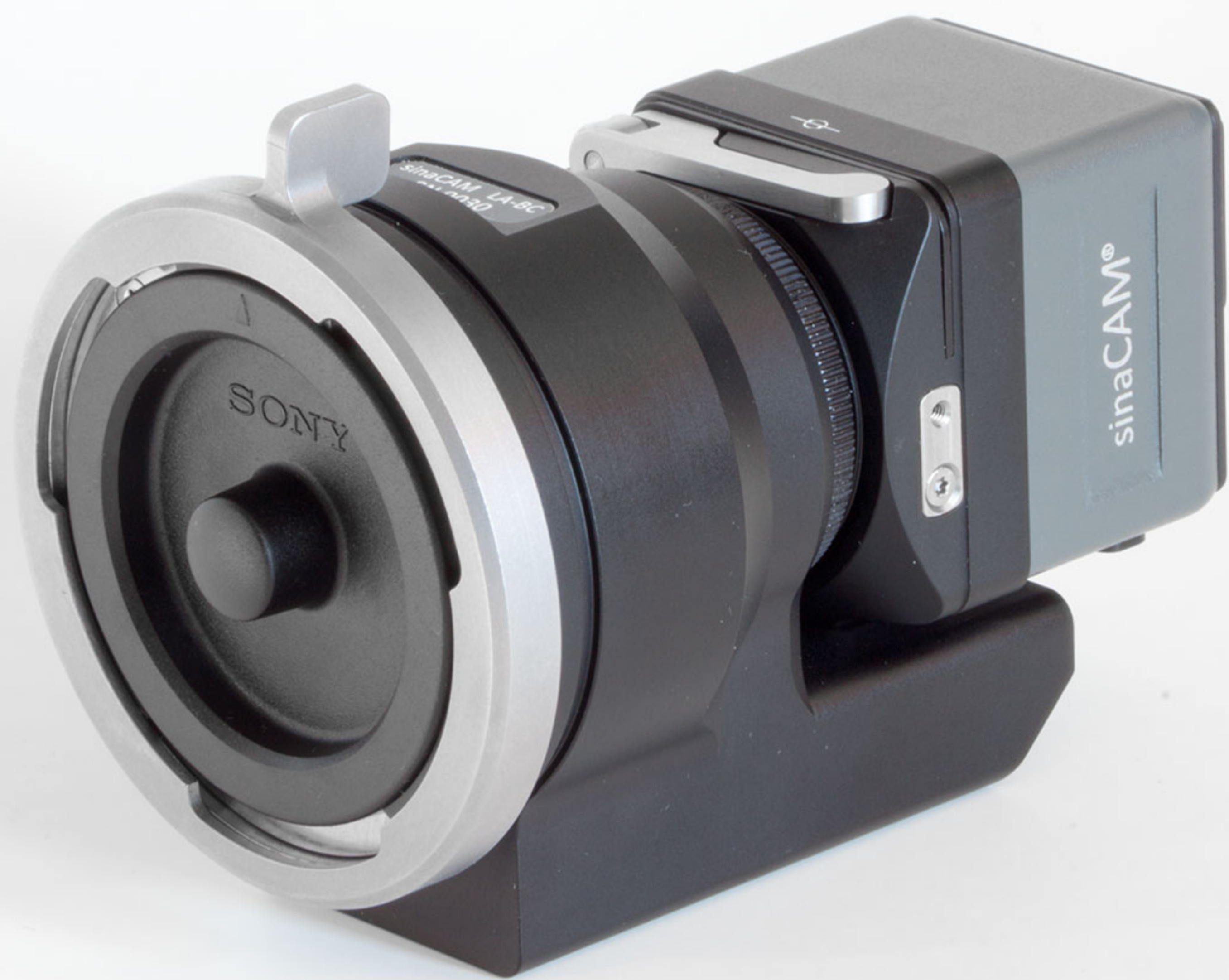
AAAM-100 Anton Bauer Mount Battery Adaptor

Mountable on top and bottom of base unit
Includes D-Tap connector



DT-50 External Power Supply

Input: 100..240V 50..60Hz AC, Output: 24V, 46W
Conformity: Class II SELV, IEC 60601-1, UL 2606, VDE, CE, FCC, Classes B/BF/CF for medical use



LABC-100 B4-Mount Lens Adaptor

Adaptor from B4-Mount to C-Mount with optical elements. Magnifies $\times 1.2$, Light loss < 0.5 f-stops
Height of optical axis: 40mm/1.575"



LAPL-100 PL-Mount Lens Adaptor

Adaptor from PL-Mount to C-Mount.
Height of optical axis: 40mm/1.575"

Kowa 10M C-Mount Lenses

The following lenses are available as paired sets for 3D with guaranteed maximum relative distortion.



LM5JC10M
5mm, f1.8-f16



LM8JC10M
8mm, f1.8-f22



LM12JC10M
12mm, f1.8-f11



LM16JC10M
16mm, f1.8-f16



LM25JC10M
25mm, f1.8-f16



LM50JC10M
50mm, f2.8-f16



IRKW-001-001
Insert Ring

27mm opening
(Kowa 10M 12, 16, 25mm)

IRKW-001-003
Insert Ring

36mm opening
(Kowa 10M 8.5, 35mm)



CG38-201
Clamp Gear

38mm diameter
(Kowa 10M 50mm)

CG33-100
Clamp Gear

33mm diameter
(Kowa 10M 5, 8.5, 12, 16, 25, 35mm)